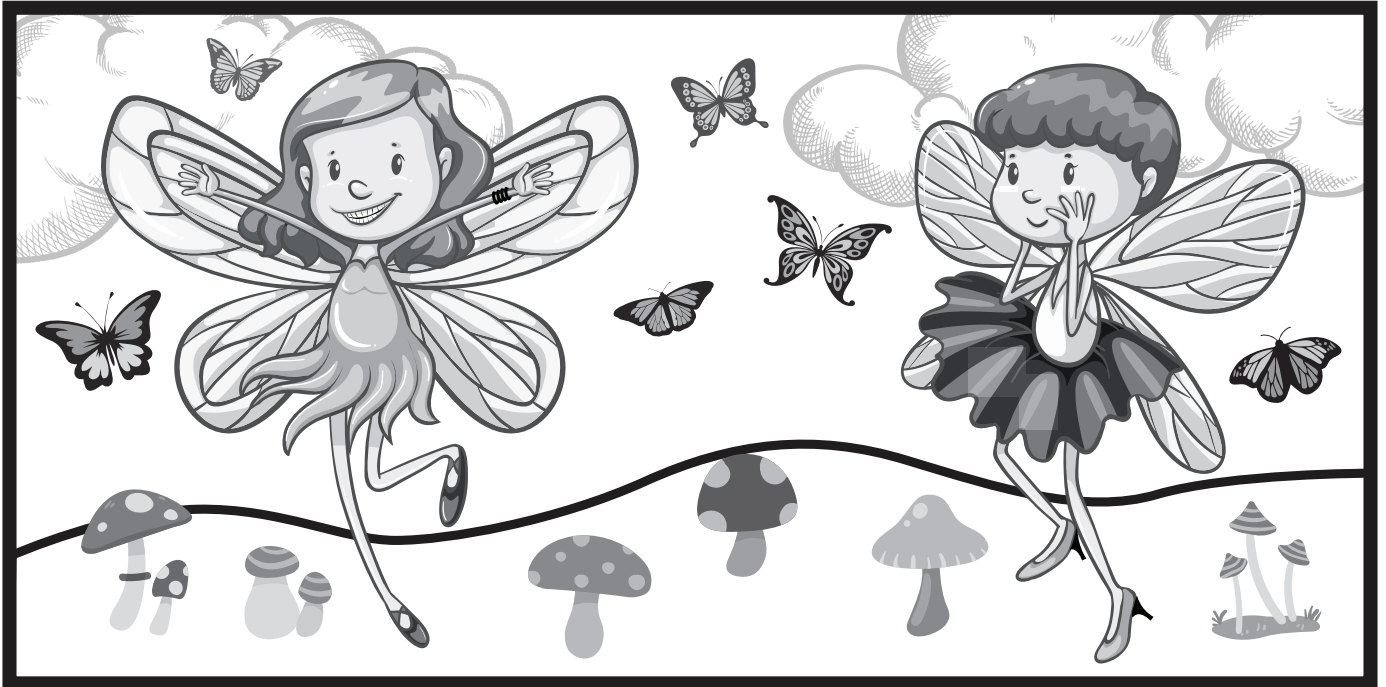
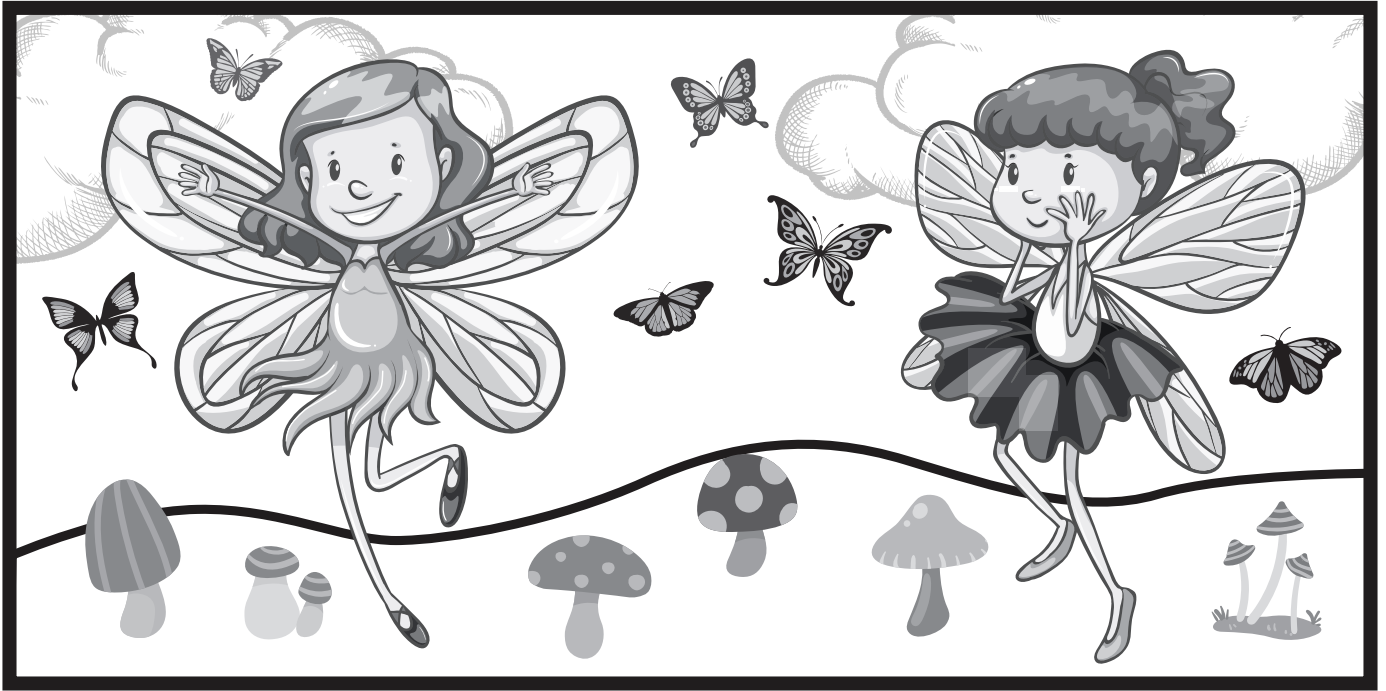


SPOT THE DIFFERENCE



Answers

1 cloud on the right is different 2 right mushroom is backwards 3 middle mushroom missing a spot 4 left butterfly is different 5 left fairy has teeth 6 right fairy is missing a finger 7 left mushroom is different 8 left fairy bracelets 9 right fairy's pony tail 10 right fairy heels